



# Site Recorder Technical Note 6

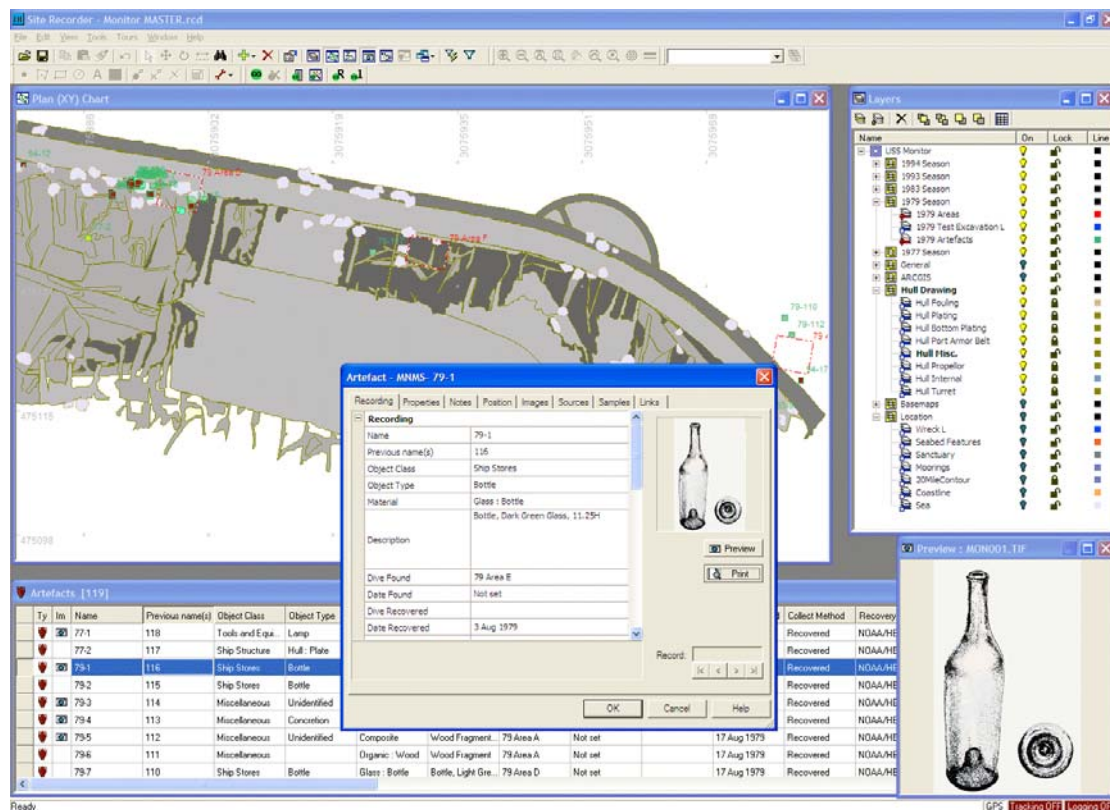
## Linking Pictures to Artefacts, Targets, Wrecks and Other Objects

This technical note is to be used with Site Recorder 4 although the principles apply to all versions of these programs.

### Introduction

Images can be linked to a number of different object types in Site Recorder. For example, you can link pictures of an artefact to an Artefact object or pictures of a wreck to a wreck object. Many images can be linked to the same object so you could add to an Artefact a picture of it in situ, one taken during registration and one after conservation. Any image can be linked so this includes photographs, scanned images, X-ray pictures or even video clips.

When an Image object is linked to another object it can be shown in a number of ways. If we link a single image to an Artefact then that image is shown in the properties page for that Artefact. If the Image Preview display is visible then the linked image is shown when the Artefact is selected on the Chart or in a List display:



The picture above shows the properties pages for an Artefact showing the linked image of a bottle in the top-right corner along with the same image shown in the Preview Display.

If more than one image is linked to the Artefact then we can choose which should be the one to be shown when the Artefact is selected. The same Image object can be linked to a number of other objects if required.

Images can be linked to a number of object types and below is a suggestion of the kinds of images that can be linked to them:

- Artefact
  - In situ, registration and publication photographs
  - X-ray pictures
  - Publication illustrations
  - 3D reconstruction
- Feature
  - In-situ photographs
  - Diver sketches
- Sector
  - A sketch of the trench or area recorded by the Sector
- Sample
  - In-situ photographs
  - Pictures showing sample type
- Wreck
  - Pictures of the vessel before wrecking
  - On-site photos
  - Video clips
- Target
  - Sidescan target images
  - Magnetometer time-series plot of the target
  - Sub-bottom profiler section
  - 3D Multibeam model
- Event
  - Team or group photos
- Dive Log
  - Pictures taken during the dive
  - Video taken during the dive
  - Picture of the Wreck or Target being investigated during that dive
- Contact
  - Photos of the person

## To Link an Image

A single existing Image object can be linked to an object or a new Image created to link to:

- 1 Open the property pages for the object to link the image to
- 2 Click on the **Image** tab then click the **Add** button to show the **Select Images** dialog

If the Image has already been added go to step 7.

- 3 In the **Select Images** dialog click the **Add New** button. A new Image object is created and its property pages are displayed.
- 4 In the **Image** property page, set the name of the Image (or use the default) then click on the **File** property. The **Open** dialog is shown.
- 5 In the **Open** dialog, navigate to the image file to link to then click the **Open** button

If the file was opened successfully then it is shown in the preview pane on the Image properties page

- 6 Set the other Image properties if required then click **OK**
- 7 In the **Select Images** dialog, click on the image to add if it is not selected already then click **OK**
- 8 The Image is now shown in the list on the Images property page


## To Link Multiple Images

Multiple images can be linked to an object at the same time:

- 1 Open the property pages for the object to link the image to
- 2 Click on the **Image** tab then click the **Add** button to show the **Select Images** dialog
- 3 In the **Select Images** dialog, hold the Ctrl key down on the keyboard then click on the images in the list that are to be linked then click **OK**
- 4 The selected images are now shown in the list on the Images property page

A range of images can be selected on the Select Images dialog using the Shift key

## To show the Image Preview Display:

- In the Window Menu, click Image Preview
- Or
- On the Main Toolbar, click the Image Preview button 

To show a larger image, click the maximise  button on the Image Preview display then click the restore button  to return it to the original size.

## Technical Support

The online help document in provides further information on this subject. To show this document, select **Help Topics** from the **Help** menu.

More information and example Site files can be found on the 3H Consulting web site found at:

<http://www.3HConsulting.com>

Faults and software problems should be reported to 3H Consulting Ltd by email, describing the nature of the problem and if possible the steps taken to reproduce it.

In some instances it is helpful to know the configuration of the computer showing the reported problems. The full configuration can be found using the System Information tool found on the **About** dialog available from the **Help** menu.

Support can be obtained directly from 3H Consulting Ltd. by sending an email to:

[info@3HConsulting.com](mailto:info@3HConsulting.com)

Version 1.0 Aug 2008